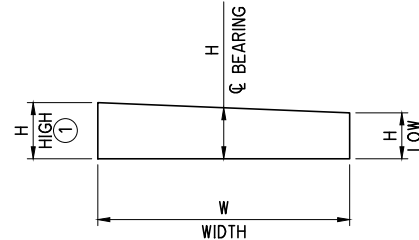


REVISIONS		
REV. NO.	DESCRIPTION	DATE

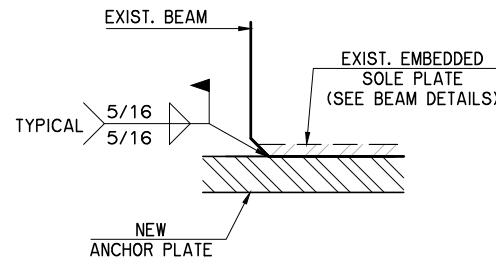


BEVEL ANCHOR PLATE DETAIL

(BEVELED ANCHOR PLATES NEEDED FOR BEARINGS IN SPANS SHOWN ON SCHEDULE ONLY)

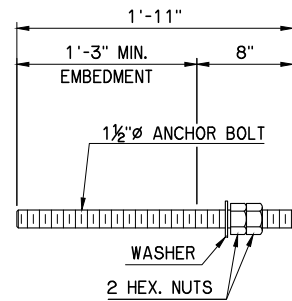
BEVEL ANCHOR PLATE SCHEDULE				
LOCATION	W (WIDTH)	H (HIGH) ①	H (C BEARING)	H (LOW)
② ABUTMENT 1, SPAN 1	10½"	5/8"	½"	7/16"
② PIER 1, SPAN 1	12½"	7/8"	¾"	5/8"
② PIER 1, SPAN 2	12½"	1 3/16"	¾"	1 1/16"
② PIER 2, SPAN 2	12½"	1 3/16"	¾"	1 1/16"
③ PIER 24, SPAN 25	12½"	1 3/16"	¾"	1 1/16"
③ ABUTMENT 2, SPAN 25	10½"	9/16"	½"	7/16"

- ① PAINT THICKER EDGE RED.
- ② PLACE THICKER EDGE TOWARD BEGINNING OF BRIDGE.
- ③ PLACE THICKER EDGE TOWARD END OF BRIDGE.



DETAIL A

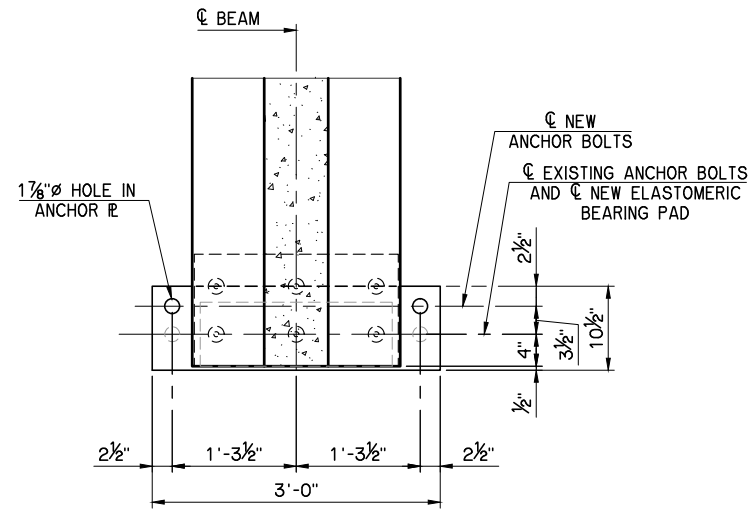
NOTE:
WELD NEW ANCHOR PLATES TO THE EXISTING SOLE PLATES BEFORE RELEASING THE BEAMS ONTO THE NEW BEARING PADS IN ORDER TO AVOID OVERHEATING OF THE ELASTOMER IN THE BEARING PADS.



ANCHOR BOLT DETAIL

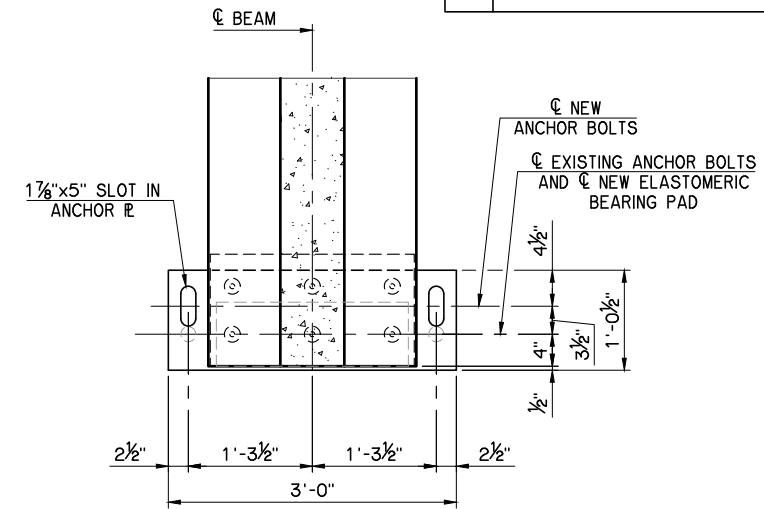
NOTES:
ATTACH ANCHOR BOLTS TO THE ABUTMENT SEAT USING ODOT APPROVED EPOXY.

ACTUAL EMBEDMENT LENGTH FOR THE DRILLED AND EPOXY EMBEDDED ANCHORS IS DETERMINED BY THE MANUFACTURER AND APPROVED BY THE ENGINEER.



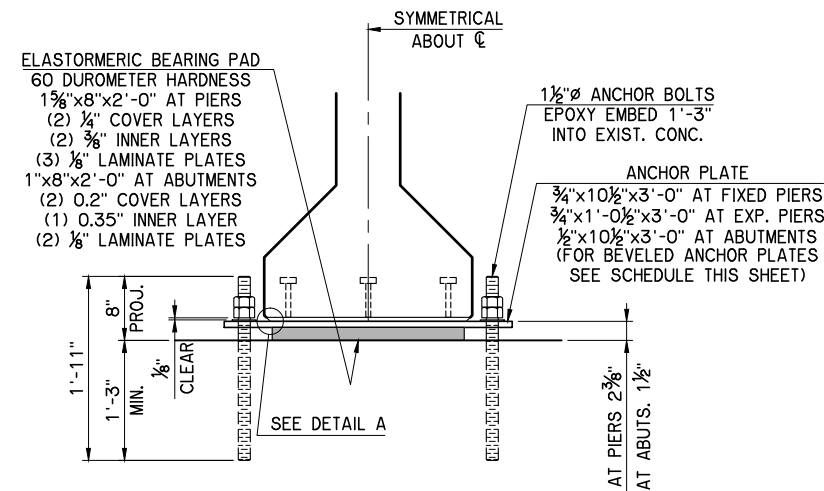
FIXED BEARING PLAN

ABUTMENT NO. 1 & 2
PIER NO. 2, 4, 6, 8, 10,
12, 14, 16, 18, 20 & 22
PIER NO. 24 SPAN 24



EXPANSION BEARING PLAN

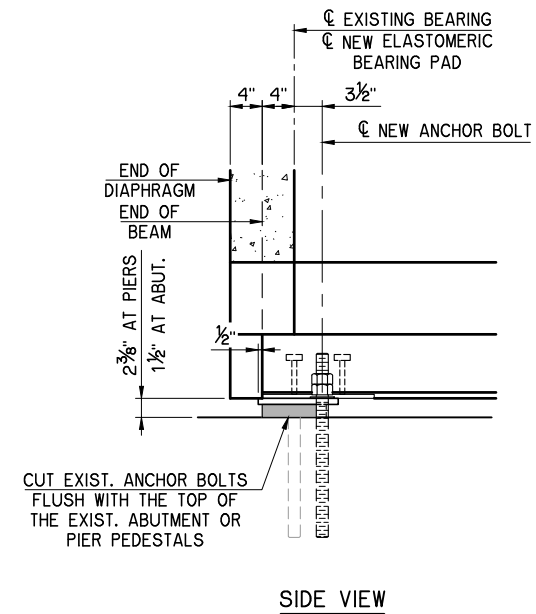
PIER NO. 1, 3, 5, 7, 9, 11,
13, 15, 17, 19, 21 & 23
PIER NO. 24 SPAN 25



END VIEW

BEARING DETAILS

NOTE:
STRUCTURAL STEEL FOR ANCHOR PLATES AND ANCHOR BOLTS HAS TO CONFORM TO AASHTO M270 (ASTM A708), GRADE 50W (WEATHERING STEEL, CHARPY V-NOTCH TESTING NOT REQUIRED).



SIDE VIEW

SH 51 NB OVER ARKANSAS RIVER	TULSA COUNTY	Design	ADT
BEARING DETAILS		Detail	FEZ
		Check	ADT
STATE OF OKLAHOMA		WHITE ENGINEERING ASSOCIATES	
		DEPARTMENT OF TRANSPORTATION	
JOB PIECE NO. 31358(04)		SHEET NO. 34	